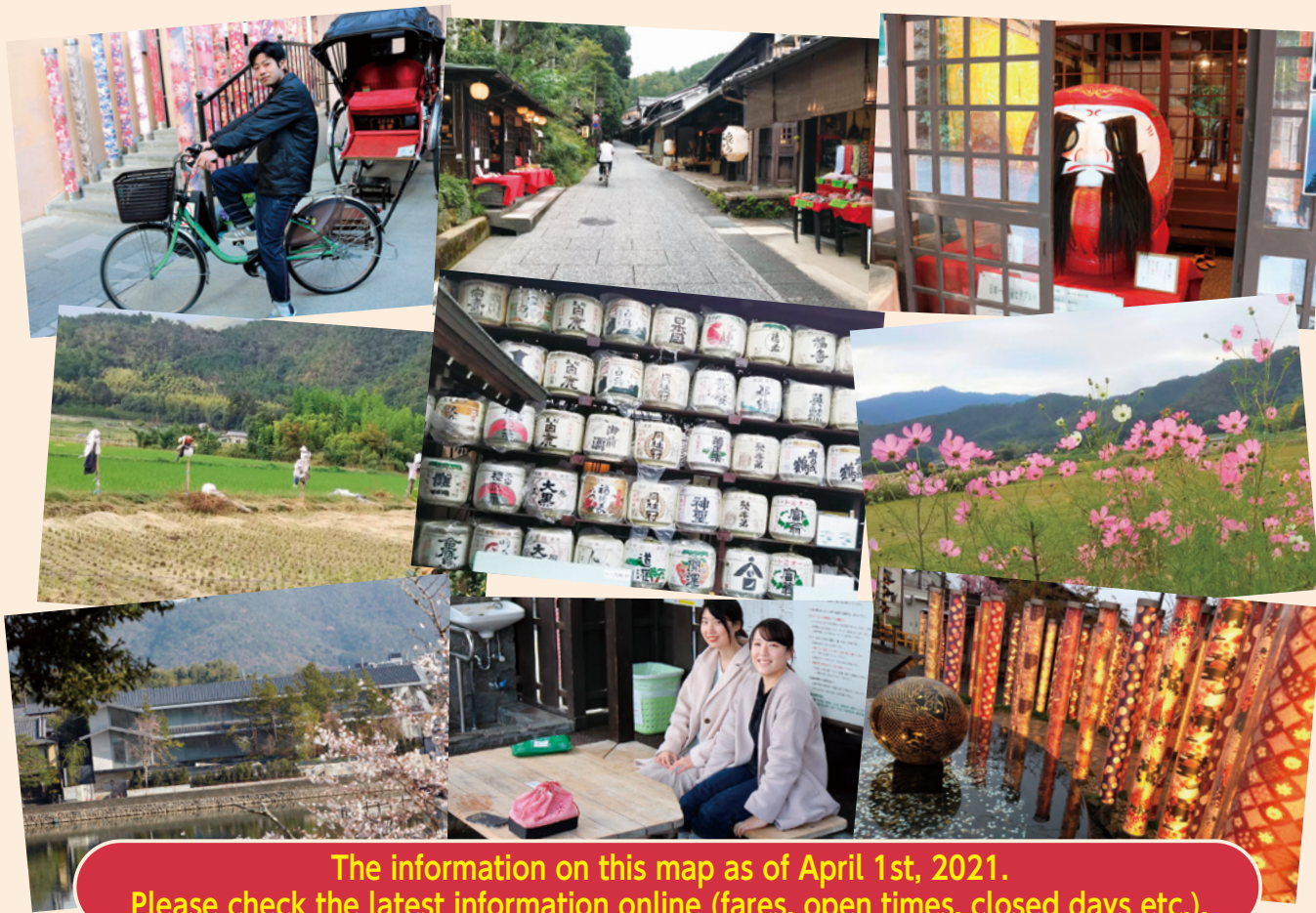


University Students' Recommendation

Half-Day Cycling around Arashiyama

Enjoy Hidden Attractions in the Arashiyama Area



The information on this map as of April 1st, 2021.
Please check the latest information online (fares, open times, closed days etc.).

Course plan	Riding time	Bicycle type	Attractive points & Course contents
A	abt 30 min	Electric bicycle	Holy place of Haiku: Rakushisha/Adashino Nenbutsu-dera Temple's stone-buddhas and stone-towers/Quiet bamboo grove You can enjoy the "backyard of Kyoto", where there are lots of spots deeply related to classical Japanese literature. There are plenty of nice cafés and restaurants along the road.
B	abt 35 min	Bicycle with 3gears	Sutra copying & tracing a picture of a Buddhist image at Daikaku-ji Temple/Osawa Pond/Beautiful view from Mt. Saga/Hirosawa Pond After sutra copying at Daikaku-ji Temple, you can enjoy pastoral scenery in Kyoto. Since there are few cafés and restaurants along this course, we recommend you bring your sandwich or lunch box.
C	abt 40 min	Electric bicycle	Shrine for entertainment & arts/Pretty cats at Umemiya Taisha Shrine/Famous spring water at Matsuoo Taisha Shrine You can cycle down the bicycle path along Katsura river, and meet gods of entertainment and sake. Please try to visit optional course to Senkou-ji Temple, where you can enjoy superb view of Arashiyama area.

*Riding time is counted by Mapion App, and is not inclusive of staying time.

Ranbura Rent-a-Cycle at Randen-Arashiyama St.

☎075-882-5110

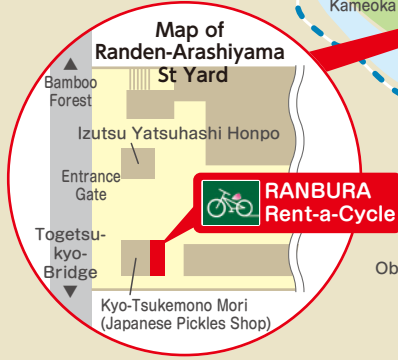
9:00~17:00(Winter season 10:00~17:00) Reception open until 15:00

Bicycle with 3 speed gears	1day 1,100yen / 2hours 600yen
Electric bicycle	1day 1,600yen / ^{Electric bicycle (sports type)} 1day 2,000yen

*All plans include a footbath ticket.

Planned and produced by KKSTNET(students group), in cooperation with Keifuku Electric Railroad Co.,LTD & Graphic Co.,LTD.

*This map was made with financial assistance from U-Kyo Ward in Kyoto City.



500m 1k

Cycling Course MAP

- A course
- B course
- C course
- JR
- Private Railroad
- Temple
- Shrine
- Convenience Store
- Toilet
- Multipurpose Toilet
- Car Parking Area
- Bicycle Parking Area
- Bus Stop
- Traffic Signal
- School
- No Entry for bicycle

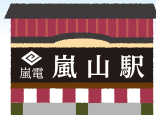
Emergency evacuation areas
 If a disaster occurs, please go to a near-by emergency evacuation area. You can stay at temporary shelter for tourists. Please get information from the emergency evacuation area staff.

Please ask our receptionist where you can park your bicycle. Please observe the rules etiquette for cycling!

Suzumushi-dera (Kegon-ji) Temple
 Koke-dera(Saihou-ji) Temple
 Matsuoo J.H.S.
 Matsuoo E.S.

A course

Each spot's reception closes 30min before the closing time.



**Randen
Arashiyama St**



abt
5min

Why don't you stop by a nice café?

On the way to Jojakko-ji Temple, there is "Sagano Kaede café". In a bright and open space, you can taste a variety of wonderful sweets.



abt
1min

A1 Jojakko-ji Temple

More than 200 maples are planted in the garden of Jojakko-ji Temple. In autumn, colored leaves delight you. There is a wonderful town view over Sagano area from its precincts.

Opening hours: 9:00~17:00 Fee: 500yen
☎ 075-861-0435



A2 Rakushisha

A small hermitage that blends into a scenery of Japanese countryside. Spend relaxing time sitting on the edge of floor board of balcony, looking out at the garden. You will surely want to compose a haiku!!

Opening hours: 9:00~17:00(10:00~16:00 in Jan. and Feb.)
Fee: 300yen ☎ 075-881-1953



You can buy Goshuin-cho and other souvenirs with persimmon motifs at Rakushisha. Your haiku can be posted into the haiku deposit box. If selected, it is published in the quarterly haiku magazine. This magazine will be mailed freely to your home address.



abt
4min

A3 Gio-ji Temple

In the moss garden, several species of moss with different colors & shapes look like a luxurious carpet. In the fall, the contrast between red leaves and green moss is breathtaking.

Opening hours: 9:00~17:00 (Reception: until 16:30)
Fee: 300yen ☎ 075-861-3574



The large round window at Gio-ji is called "Yoshino mado". Since window lattice and outer bamboo thicket intersect, the colors of scenery change accordingly, so it is also called "rainbow window."



abt
6min

A4 Adashino Nenbutsu-ji Temple

Quiet bamboo grove is the best place for taking photos. Lighting candles on more than 8,000 stone-Buddhas and stone-pagodas are known as "Sentou-kuyo", one of the famous summer traditions. It is held every year on the last weekend of August.

Opening hours: 9:00~16:30
(from December to February, ~16:00)
Fee: 500yen for adults, 400yen for junior and senior high school students
☎ 075-861-2221



abt
12min

**Randen
Arashiyama St**



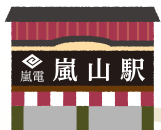
For your travel souvenirs!

Along this way, there is a rare shop selling Japanese dolls made from silkworm cocoon. Here you are able to see and purchase lovely and heart-warming souvenirs.



B course

Each spot's reception closes 30min before the closing time.



Randen Arashiyama St



abt 9min

B2 Imperial tomb of Emperor Saga

The Emperor Saga tomb is located on top of Mt. Saga, and it is a demanding walk up many steps. However, you can enjoy the superb view from the top of the mountain as well as on the way to the grave. In autumn, colored leaves are very beautiful. Please park your bicycle at the roadside by the entrance of the imperial grave.

Opening hours: Anytime (free of charge)



abt 3min

abt 2min

The mountain, which you can see in the distance, is Mt. Atago (924m above sea level). On its top, there is Atago Shrine, which is famous for having the miraculous power of fire prevention. On Mt. Hiei (848 m) in the east of Kyoto, there is Enryaku-ji-temple. Both of them are protecting and guarding Kyoto against evil spirits. Mt. Atago has a popular public climbing course. The kindergarten pupils and elementary school students as well as local people are enjoying the hiking to Mt. Atago.



abt 4min

Randen Arashiyama St



abt 13min



abt 5min

There are a few cafés and restaurants along the "B" course. We recommend you bring the lunch box with you. How about getting pork-cutlet sandwich (more details on the "Information" page on this map)?

B1 Daikaku-ji Temple

Daikaku-ji Temple was built in Heian era, as a Saga emperor's detached palace, hence that building's name: Saga's Imperial Palace. Inside the palace, you can see beautiful paintings on sliding doors (fusuma) and enjoy the rock garden. Moreover, there are many viewing spots around Osawa Pond.

Opening hours: 9:00~17:00 (Last entry 16:30)

Fee: (Temple area) Adult:500yen·Under18:300yen (Osawa Pond area) Adult:300yen·Under18:100yen

☎ 075-871-0071

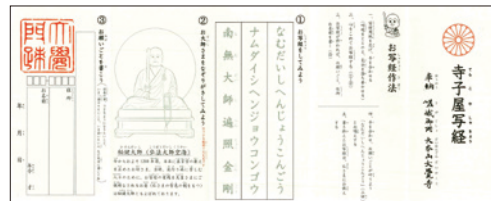


How about copying sutra and tracing a picture of a Buddhist image at Daikaku-ji Temple?

We recommend "Terakoya Shakyo"(Sutra Copying), as you can get a taste of real Buddhist training by your own hand writing.

Required time: 15~30min

Fee: 800yen Reception: 9:00~15:30



B3 Vegetables vending machine

There are several vegetable vending machines along the way between the grave of emperor Saga and Hirosawa Pond. You can buy fresh vegetables in season from these vending machines and eat fresh local produce: tomato, cucumber etc.



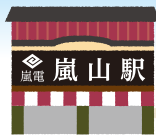
B4 Hirosawa Pond

This pond is selected as one of the 100 best ponds in Japan and has also been designated as one of Special Historic Natural Feature Conservation Zones in Kyoto. In recent years, the Pond is used for carp farming.



C course

Each spot's reception closes 30min before the closing time.



Randen Arashiyama St

abt 8min

C1 Roku-in Temple

Roku-in is a temple with a beautiful garden with views of Arashiyama. When you pass through the gate, you will see a maple tunnel and moss carpet.

Opening hours: 9:00~17:00 Fee: 400yen
☎ 075-861-1645



*Please park your bicycles side by side at the corner of the parking space.

C2 Kurumazaki-jinja Shrine

Within Kurumazaki Shrine, there is a smaller shrine for entertainment: Geinou-jinja, where many famous Japanese entertainers visit to pray. The rumor is that using its photo as your smart phone's standby wallpaper will bring you luck.

Opening hours: 9:00~17:00
☎ 075-861-0039



*Please park your bicycles side by side at the corner of the parking space.

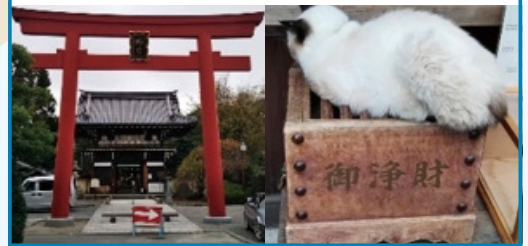
abt 5min

abt 12min

C3 Umemiya Taisha Shrine

In spring, we can enjoy the plum flowers. However beautiful flowers bloom throughout the four seasons. It is one of the three major Sake-Shrines in Japan. Local cats at this shrine are very cute. Cat lovers in Japan want to visit here at least once in their lifetime.

Opening hours: 9:00~17:00
Garden entrance fee: Adult:600yen Child:400yen
☎ 075-861-2730



*Please park your bicycles side by side at the corner of the parking space.

abt 5min

abt 12min

C4 Matsuoo Taisha Shrine

The big red gate Torii is the symbol of this Sake-Shrine. Please also visit "Sake Museum(free)" to see sake brewing tools.

Opening hours: Weekdays, Saturday 9:00~16:00
Sunday, Public holidays 9:00~16:30

Garden & God Statues Museum Fee:
Adult:500yen Student:400yen Child:300yen
☎ 075-871-5016



A water spring at Matsuoo Taisha Shrine is called "Kame-no-i". This water is good for your longevity and revitalization. Sake brewers use this water to make their sake. A bottle (100yen) is sold at this shrine, and you can take the water to your hotel or home.

Randen Arashiyama St



abt 3min



C5 Katsuragawa Cycling Road

45km cycling road from Arashiyama to Izumi-bridge in Kizu City. It is refreshing for you to cycle on a part of it. You would surely enjoy nice views around Togetsu-kyo Bridge and Katsura River.



C6 Senko-ji Temple

Optional course

A temple 1km upstream from Togetsu-kyo Bridge. After going up the steep road, you will enjoy the superb view of Hozu-kyo Valley and city area. You can ring the temple bell up to three times per person.

Opening hours: 10:00~16:00 Fee: 400yen
☎ 075-861-2913



Please walk from the parking near the pier.

abt 15min one way on foot

A long-established sake shop where you can buy various local sake as a perfect souvenir!!

9 minutes walk from Arashiyama Station along B course, you will find "Omatto(おまつと)", sake store. There are various types of tasty sake produced by local brewers.



Information

User of "RANBURA-Rent-a-Cycle" can take a footbath at Randen-Arashiyama Station for free!

●Open: 10:00 Close: 18:00

*Reception closes 30 min before closing time.

After cycling, you can take a footbath for free. If you want to take a footbath only, you can buy a ticket at the station information center. Footbath water, brought from the source of Arashiyama Onsen (hot spring), is beneficial for your skin. The health benefits of hot spring baths include recovery from fatigue and improved overall health. After enjoying cycling, you can take a break in real hot spring to relieve the weariness, and you can get a towel as a souvenir. Please enjoy it!



Advice for tourists in time of disaster

If a disaster occurs,

- Stay where you are and provide for your safety.
- When the conditions are safe, please go to the emergency evacuation area, and follow the instructions given by the staff. Please check the nearest emergency evacuation area on this map page.

*Via the right QR code, you can get "Kyoto City Guide Map for People Stranded During Disasters". For more information, please visit the following URL: <https://www.bousai.city.kyoto.lg.jp/kitakushien/>.



For more information

●Kyoto General Tourist Information Center

☎075-343-0548 8:30~19:00→English, Chinese and Korean support available

●AMDA International Medical Information Center (<https://www.amdamedicalcenter.com/>)

☎03-6233-9266 Monday through Friday 10:00~16:00

The medical telephone consultation is possible in English as well as some other languages. Please refer to the site via the right QR code for more information.

●VoiceTra (<http://voicetra.nict.go.jp/>)

Voice Translation App in 31 languages



Restaurants and Souvenir shops around Randen-Arashiyama Station: A recommendation from students editors

(The color of the frame indicates a cycling course: "A", "B" or "C".)

1

Sagano Kaede Café

Sweets that blend Japanese and Western tastes are very popular!

☎ 075-756-7415
Open: 12:00~17:00
Closed: Thu
(changed in each season)



2

Adashino Mayumura

You can buy pretty dolls made from silkworm cocoon.

☎ 075-882-4500
Open: 9:00~17:00
7days a week



3

Pizzeria Lugara

You can eat in or take out a brick-oven pizza

☎ 075-203-9391
Open: 11:00~18:00
Closed:
Wed & some holidays



4

Liquor Store OMATTO

An old sake shop selling local sake from Kyoto.

☎ 075-871-0138
Open: 10:00~17:00
Closed: Thu



5

Saga Tofu Morika

Famous tofu shop & factory in Kyoto

☎ 075-872-3955
Open: 9:00~17:00
Closed: Wed(or Tue)



6

Nakamura Deli

Pork-cutlet sandwich perfect for lunch!

☎ 075-863-1888
Open: 8:00~18:00
Closed: some holidays



7

London Books

Very fashionable secondhand bookstore.

☎ 075-871-7617
Open: 10:00~19:30
Closed: Mon (and third Tue)



8

Rickshaw café

Cafe latte is very nice!

☎ 075-334-6462
Open: 9:00~18:00
It changes depending on the public conditions
Closed some holidays



9

CHAVATY Kyoto Arashiyama

High quality Tea Latte & Scones are delicious!

Open: 10:00~19:00 year round



Fukuda Museum of Art

☎ 075-863-0606

Open: 10:00~17:00 *The entrance gate closes at 16:30
Closed: Tue (Wed if Tue is a holiday)

Admission: Adult:1,300yen,
High school student:700yen

Elementary and Junior high school student:400yen,
Disabled person with a helper:700yen

*Please ask our receptionist by telephone where you can park your bicycle before visiting here.



Arashiyama Monkey Park

☎ 075-872-0950

Open: 9:00~16:30 (last admission: 16:00)
Open all year (closed in stormy weather)

Admission:

Adult:550yen

(high school student and older),

Child:250yen

(4 years of age to junior high school student)

